



**IHSGB**  
**British Championships**  
**& Summer Festival**  
**West Tarf, West Linton, Scotland**  
**19<sup>th</sup> – 21<sup>st</sup> June 2015**

## **General information for competitors**

### **Arrivals:**

- You are permitted to arrive at the showground after 12pm on Thursday 18<sup>th</sup> June.
- All passports for horses will be inspected on arrival and until this is completed, please do not unload your horse.

### **Training times:**

- Free training is available on the track from Thursday 1pm until 7pm and Friday 9am until 3pm.
- It will be limited to 4 horses on the track at any time – please respect other competitors and limit your usage time.
- Only registered horse / rider combinations may train – so don't ask someone else to train your horse for you! This is not permitted once you have entered the tournament grounds.
- Anyone seen to be training their horse in an inappropriate manner will be cautioned.
- Please be aware that there will be some interruptions to training whilst the completion of 'set up' takes place – this will be done at the organiser's discretion.

### **Horse facilities:**

- All horses must be corralled in their own pen – they are your responsibility during the tournament!
- Please make sure you have the correct equipment for doing this – no 'mains' electricity will be available, so bring a charging unit for your fence.
- Drinking water for your horse will be available – remember to bring buckets!
- All horses that have pre-booked a stable will also have to have access to 'outside turnout' – this is your responsibility to allow your horse access to a fenced pen.
- Access to the horse area will be limited to riders only and not accessible to the general public. Please do not invite your friends to visit your horse!
- If there are children in the horse area, please make sure they are supervised by an adult at all times.
- Horse waste will be collected by you and you must leave your paddock clean at the end of the tournament. There will be clear instructions on where to put the droppings!
- Please bring coats, feed, hay for your horse and anything else it requires!
- Additional hay is available if requested – you should contact Kirsty (07730714565) if required.

### Camping:

- There will be a designated area for camping.
- Please note that there will be no access to drinking water – we suggest you bring this with you.
- NO HORSES are permitted to enter in to the camping area.

### Warm up:

- There will be a designated area fenced for warming up prior to your class.
- Please note that this will be on grass.
- You will be called from this area to the 'collecting ring'. If you are riding in a group class, you will be given coloured armbands to put on and called forward from here to the track.

### Catering facilities:

- There will be catering facilities on-site during the tournament on Saturday and Sunday – until 3pm approximately each day.
- Hot and cold drinks, snacks, rolls and soup available.
- If you have booked the evening meal for Saturday – please bring your own chair with you!!
- There are local shops available in West Linton – a Co-op store and small general store.
- On Friday evening – we will have an 'open BBQ' available for all! This will run soon after the Riders meeting. The BBQ is provided – but you must bring your own food!!
- There is a pub in the village of West Linton and a small restaurant – you can find details on: <http://www.westlinton.org.uk/> Booking is advisable!
- There is also a large selection of takeaway facilities in nearby town of Penicuik.

### Dogs:

- Dogs are permitted on the show ground.
- Please keep them on a lead at all times.
- Please clean up after your dog too!

### Emergency details:

- An emergency vet will be on site and available if necessary.
- An emergency farrier will be on site and available if necessary.
- Kirsty Carson (07730714565) should be contacted immediately if you require assistance with either of these.

### Access:

- Access for competitors and horses is at **'Tarf Haugh' – Bogsbank Road.**
- Clear signage will be placed in and around the village of West Linton.
- **The village of West Linton has a very narrow and busy main street – please take care when travelling through the village.**
- Directions to the showground – Tarfhaugh, West Linton, Peeblesshire:

West Linton is eleven miles south of Edinburgh and the main access road from all directions is the A702. Directions are provided in the following order:

1. A702 from the South (Biggar/M74/M6)
2. A702 from Edinburgh/North (A720)

1. A702 from the South (Biggar/M74/M6)

Leave the M74 at Abington (signs for Edinburgh A702) keep on the road through Biggar. Follow the A702 from Biggar towards Penicuik/Edinburgh. Drive past West Tarf entrance and after you pass the speed sign, ahead of you on the right is The Gordon Arms Hotel. Immediately before it take the road R signed Peebles (B7059) through West Linton village (if you miss the turn before the pub, take the one immediately after it as they join below the pub).

**XX** Take care driving through the village as it's narrow and twisty and full of parked cars. Follow the road till you see the white church on your R at the end of the main street. The road bends left, you need to turn R-ish (almost straight ahead) over the little river into Bogsbank Road (over the weight restricted bridge) .

Follow this road past the cemetery on the left, take the next opening on the R (just before a left bend) which is a farm track with a sign at the end for 'Tarfhaugh'.

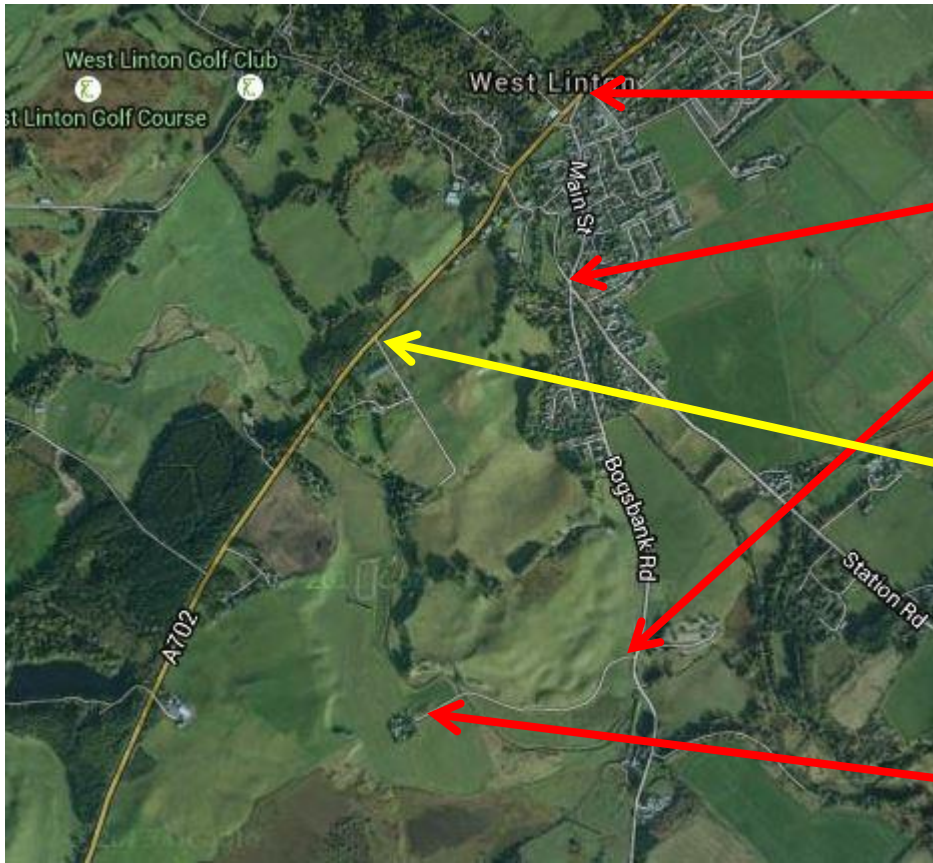
The entrance to the field is at the end of this track.

2. A702 from Edinburgh/North

If coming from North of Edinburgh, leave A720 city bypass @ Lothianburn junction and follow signs A702 Carlisle/Biggar.

Stay on this road following signs West Linton and then village centre/Peebles B7059. Turn L into village immediately before Gordon Arms Hotel and follow directions from **XX** above.

- Access for spectators is from 'West Tarf'. Spectators are asked to park at West Tarf, by the indoor arena and then there is a walk down to the oval track. If disabled access is required for spectators, they should contact Kirsty on 07730714565.
- NO HORSES are permitted to go from the show ground to West Tarf, unless they are dressage competitors (Friday evening only) or are competitors from West Tarf itself.



Junction from A702

Small bridge on to 'Bogbank Road'

Access track - 'Tarf Haugh'

'West Tarf' - spectators access to parking

Show ground entrance



Spectator access by foot

Catering facilities

Warm up / collecting ring

Camping

Lorry / Trailer / Car parking

Grazing and stabling

\*Please note that 'Tarf Haugh' is a private residency.